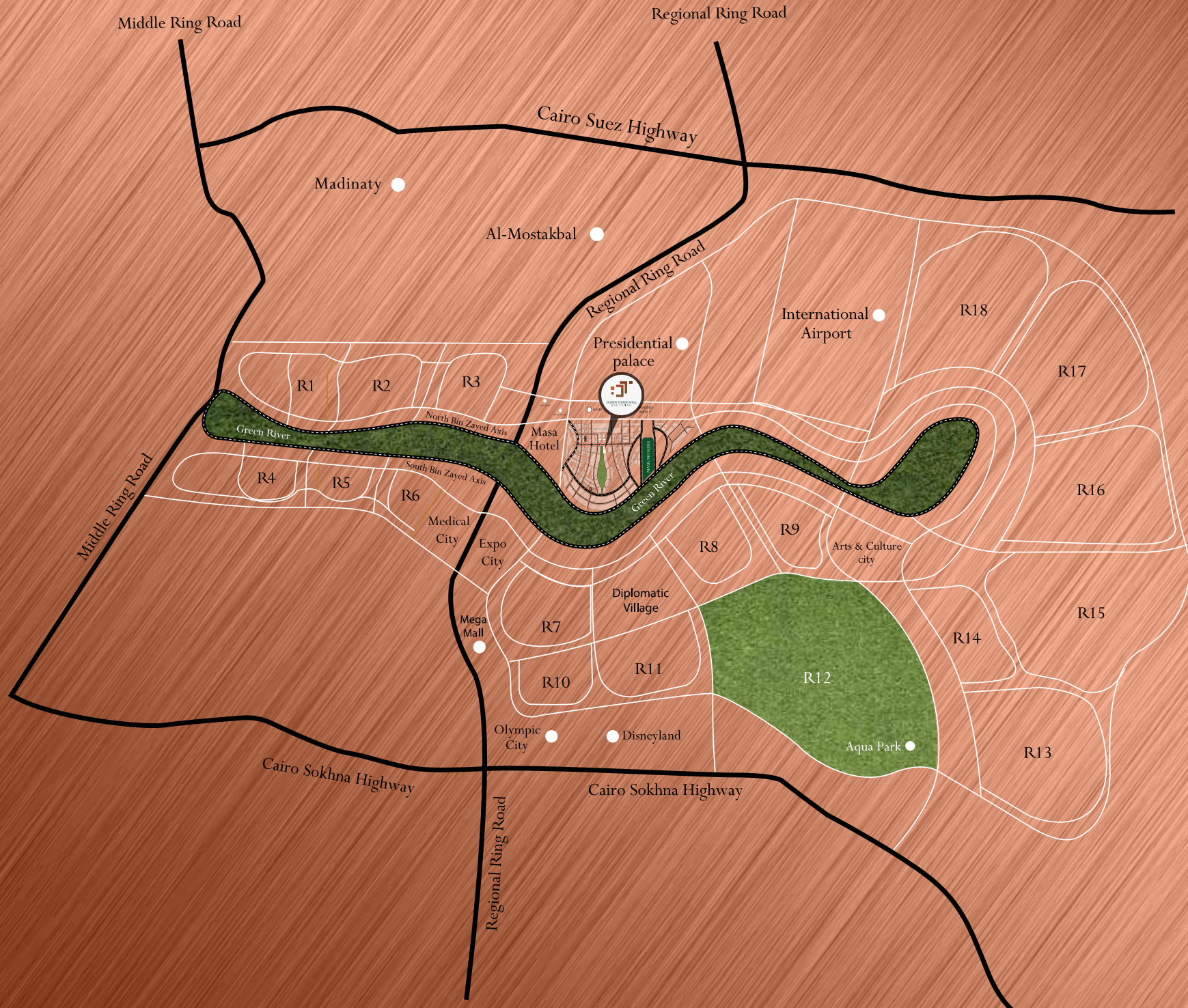




DOWN TOWN MALL  
NEW CAPITAL

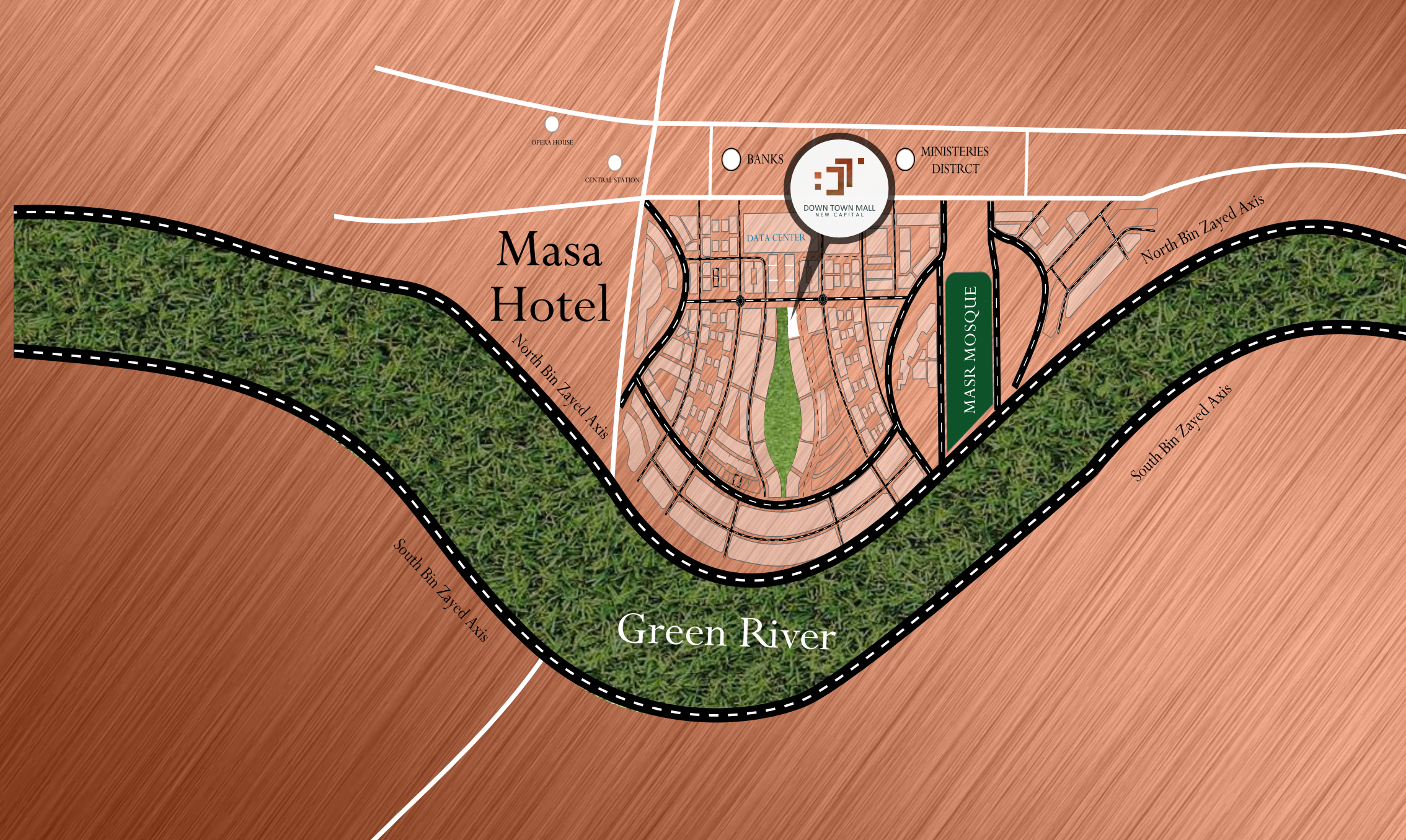
# New Capital

We step foot in the real estate market's best destination, the new administrative capital, the place that has it all and beyond, with all the technologies and facilities that make every investment profitable, and grant the return on investment. It is the ultimate port of call of the fastest internet connection, the greatness of skyscrapers, the fast base of investment, and the safest place to work, live, and invest.





**New capital,  
new horizon of  
impact and prosper.**



The beaten heart of the new administrative capital that serves the whole town.





SA  
AUTUMN

Shop

Shop



DOWN TOWN MALL  
NEW CENTRAL

RIVERSIDE - BAKERY

SALES

SALES



**A distinctive location,  
the Downtown mall has a view of the central garden**



ROI

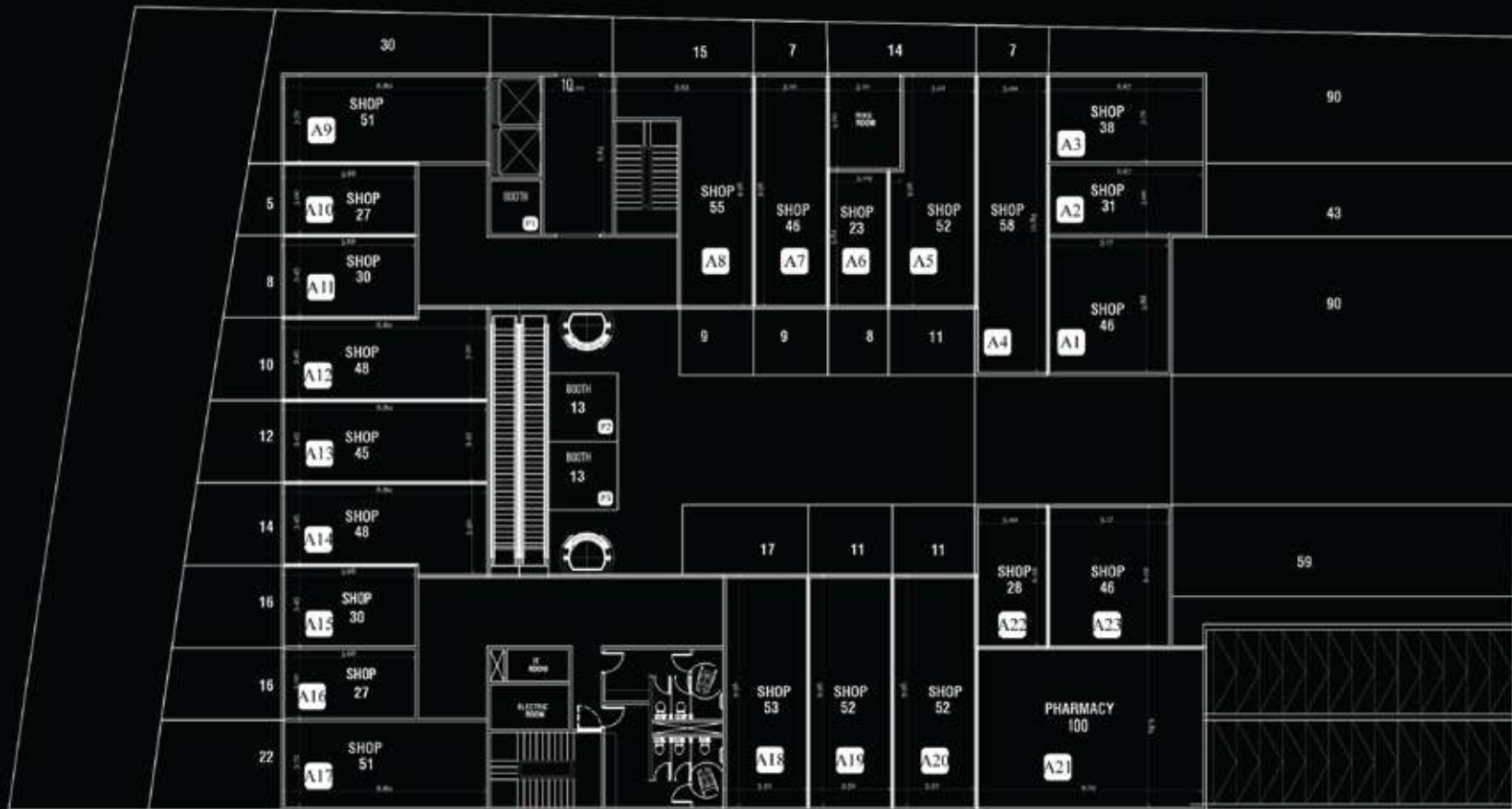


down payment **0%**  
and up to

**20 years**  
installment plans

# Units





## GROUND FLOOR PLAN

**Commercial** starts from **27 meters**.  
**Prices** start from **55,000 EGP**.



DOWN TOWN MALL  
DC  
NEW CAPITAL

RIVERSIDE BAKERY 烘焙  
me

